

SC 260 | SC 262 USB SC 230 | SC 232 USB

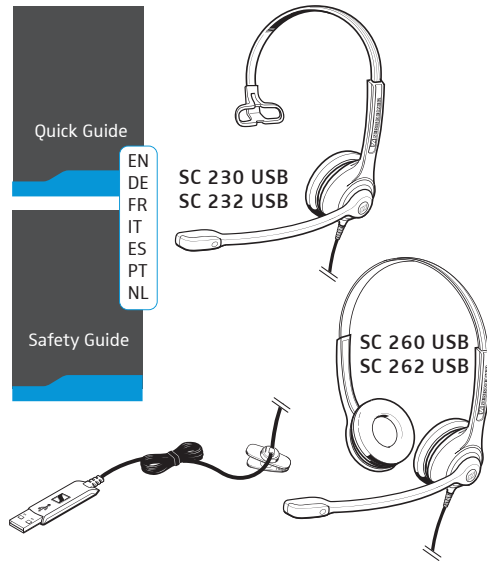


Quick Guide
Kurzanleitung
Guide rapide
Guida rapida

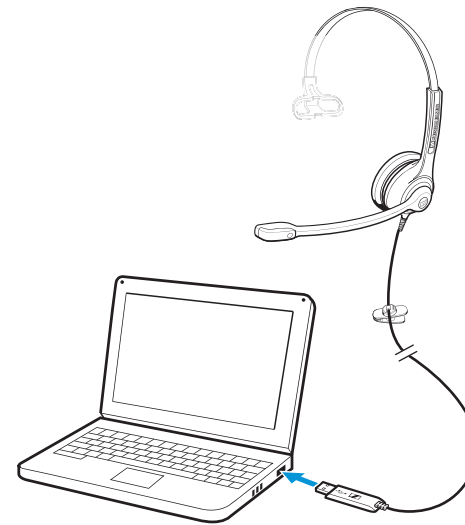
Instrucciones resumidas
Guida rápido
Beknopte handling
Guida rapida



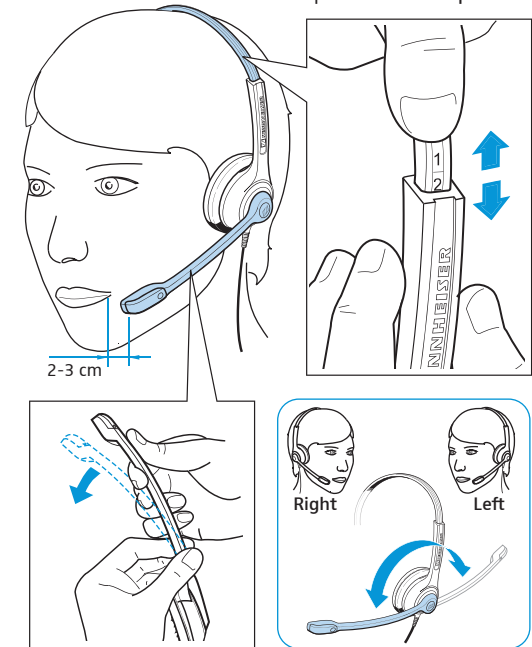
Delivery includes | Lieferumfang | Contenu |
Volume di forniture | Volumen de suministro |
Itens fornecidos | Leveringsomvang



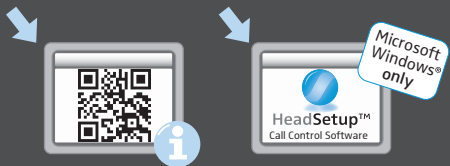
Connection possibilities | Anschlussmöglichkeiten |
Possibilités de raccordement | Possibilità di
collegamento | Posibilidades de conexión | Ligações
possíveis | Aansluitmogelijkheden



Wearing the headset | Headset aufsetzen |
Mettre le casque-micro | Indossare l'headset |
Ponerse los auriculares | Colocar o micro-
auscultador | De headset opzetten



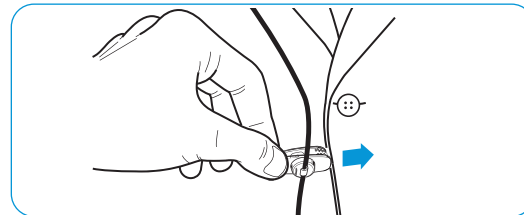
Detailed information | Ausführliche
Informationen | Informations détaillées |
Informazioni dettagliate | Informaciones
detalladas | Informações detalhadas |
Uitvoerige informatie



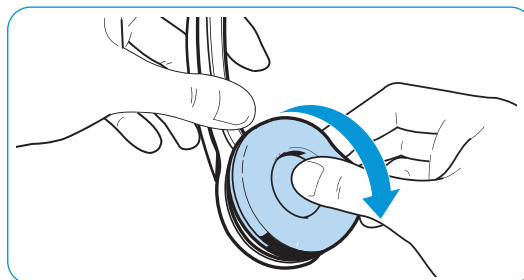
[www.sennheiser.com/
cco/support](http://www.sennheiser.com/cco/support)

[www.sennheiser.com/
cco/software](http://www.sennheiser.com/
cco/software)

Using the cable clip | Kabel-Clip verwenden |
Utiliser la pince pour câble | Utilizzo della clip
per cavo | Utilizar el clip de cable | Utilizar
o grampo para cabo | Kabelclip gebruiken

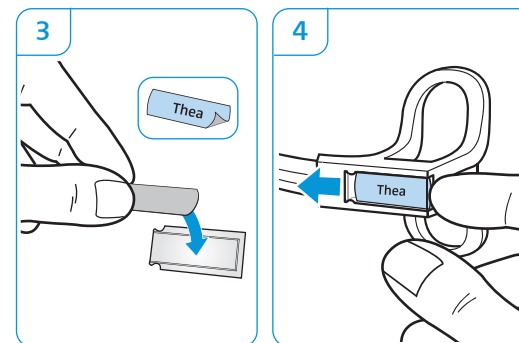
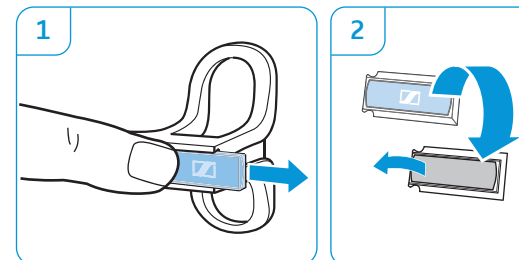


Replacing the ear pad | Ohrpolster austauschen |
Remplacer le coussinet d'oreille | Sostituzione dei
cuscinetti auricolari | Cambiar las almohadillas |
Substituir as almofadas | Oorkussens vervangen

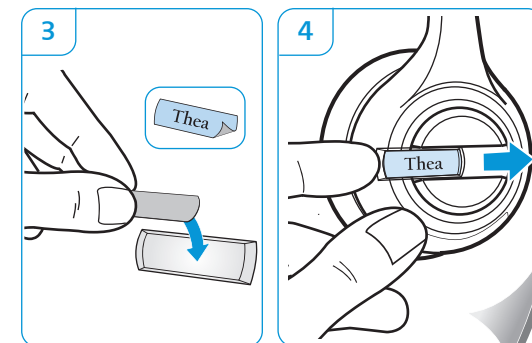
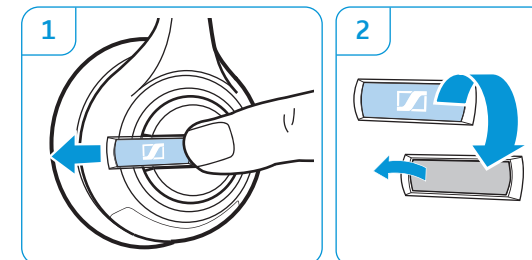


Labeling the headset | Headset kennzeichnen | Marquer le casque-micro |
Contrassegni dell'headset | Marcar los auriculares con un nombre |
Identificar o micro-
auscultador | Headset markeren

SC 230 | SC 232



SC 260 | SC 262



Sennheiser Communications A/S
Industriparken 27, 2750 Ballerup, Denmark
www.sennheiser.com

Printed in China, Publ. 07/13, A03

SC 260 | SC 262 USB SC 230 | SC 232 USB

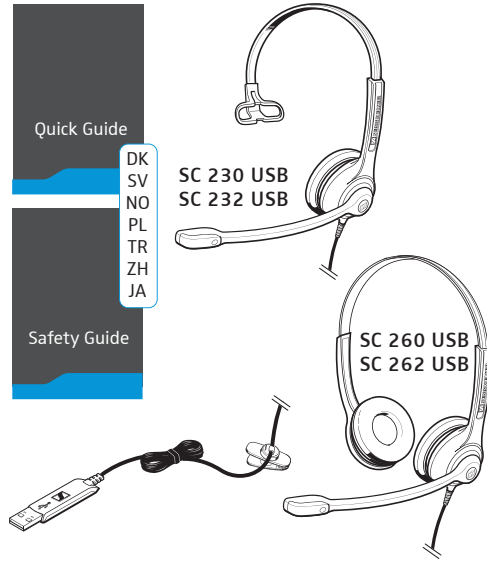


Quick Guide
Snabbguide
Quick Guide
Krótka instrukcja obsługi

Hızlı Kılavuz
快速指南
クイックガイド



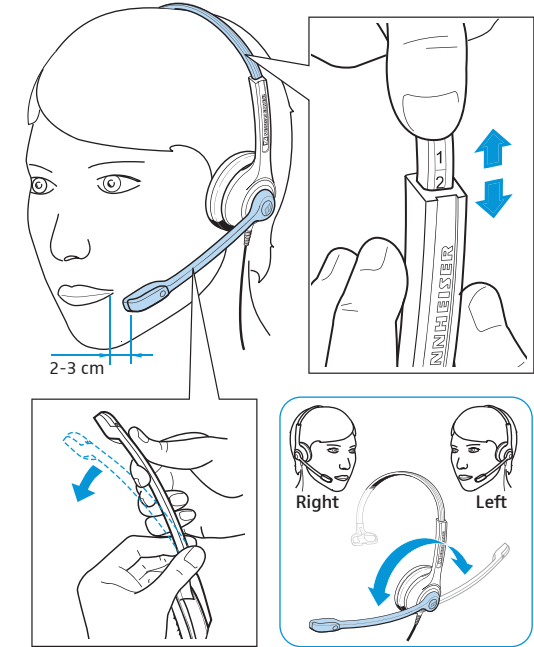
Leveringsomfang | Medföljande delar | Leveranse-
omfang | Zakres dostawy | Teslimat Kapsamı |
供货范围 | 同梱されているもの



Tilslutningsmuligheder | Anslutning | Tilkoblings-
muligheder | Możliwości podłączenia | Bağlantı
olanakları | 连接可能性 | 接続方法



Brug af hovedsæt | Ta på headsetet | Sette på
hodesettet | Zakładanie zestawu słuchawkowego |
Kulaklığın takılması | 戴上耳机 | ヘッドセットを装着する



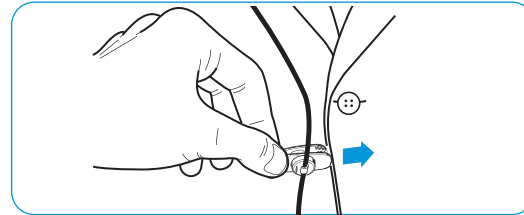
Udførlige informationer | Mer information |
Detaljert informasjon | Szczegółowe
informacje | Ayrıntılı bilgiler |
詳細情報 | 詳細情報



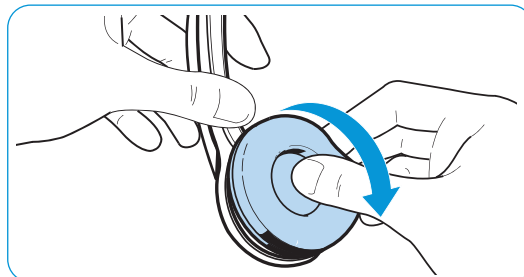
[www.sennheiser.com/
cco/support](http://www.sennheiser.com/cco/support)

[www.sennheiser.com/
cco/software](http://www.sennheiser.com/
cco/software)

Brug af kabelclips | Använd kabelklämman |
Bruk av kabelklips | Używanie zacisku kablowego |
Kablo mandalı kullanılması | 使用耳机线夹 |
ケーブルクリップを使用する

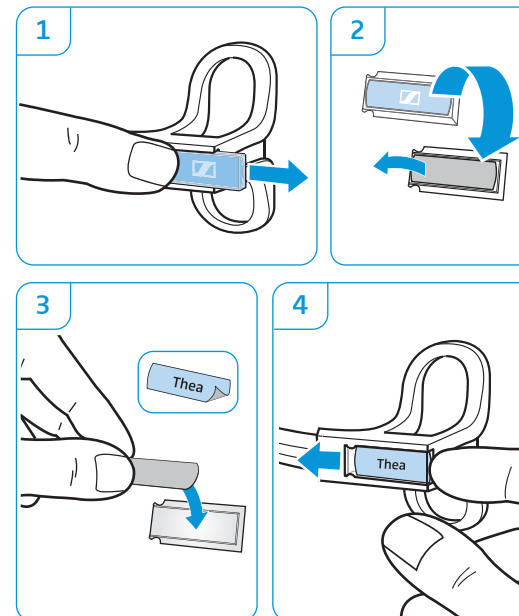


Udskiftning af ørepolstringer | Byt öronkuddar |
Utskiftning av öreputer | Wymiana poduszek
słuchawkowych | Kulak yastığının değiştirilmesi |
更换耳垫 | イヤーパッドを交換する

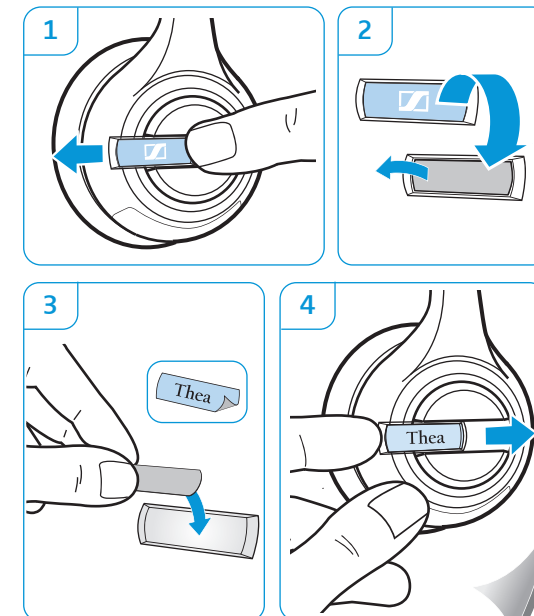


Identifikation af hovedsættet | Märk headsetet | Merke hodesettet | Oznakowanie zestawu
słuchawkowego | Kulaklık setinin işaretlenmesi | 标记通讯耳 | ヘッドセットにラベルを付ける

SC 230 | SC 232



SC 260 | SC 262



Sennheiser Communications A/S
Industriparken 27, 2750 Ballerup, Denmark
www.sennheiser.com

Printed in China, Publ. 07/13, A03